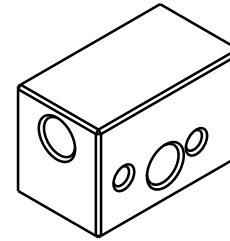
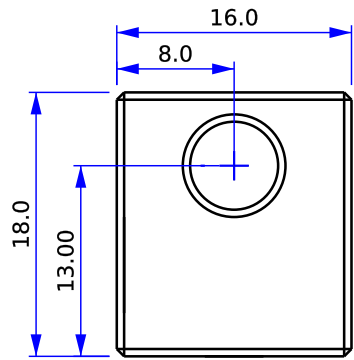
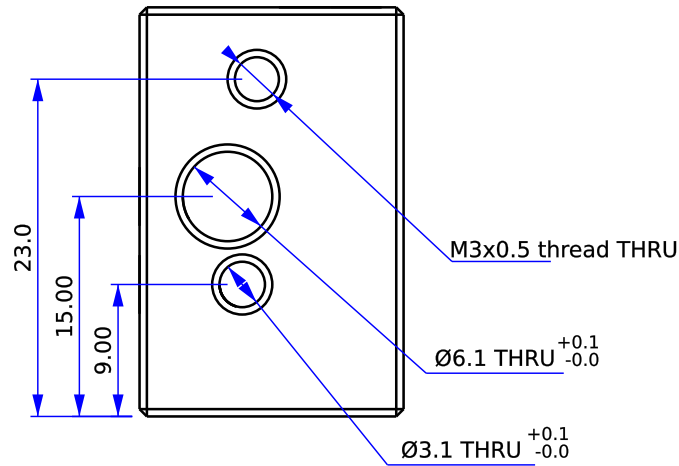
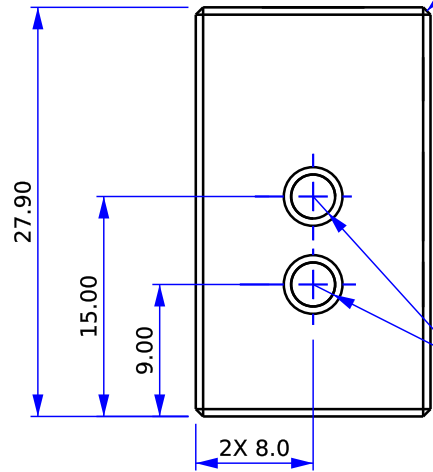


Rev	Date	Description
B	10.07.16	Dimensions modified based on mfr produced samples.
A	09.12.16	Name changed to MOARstruder and laser etching added.
IR	06.21.16	Initial release

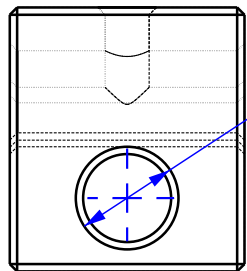


Chamfer all edges and holes 0.5mm unless otherwise noted.



Notes:

1. Material: 6061-T6 Aluminum
2. Parts must be RoHS compliant.
3. Remove all burrs and shavings.
4. Clean thoroughly to remove oils.



Lead in chamfer 0.5mm MAX

DRAWN BY: bam	DATE: 6.21.16
MATERIAL: See Notes	
UNLESS OTHERWISE SPECIFIED DIMENSIONS ARE IN MILLIMETERS. TOLERANCES ARE:	
DECIMALS .X±.75 .XX±.25 .XXX±.125 .XXXX±.050	ANGLES X°±1° 63
BREAK EDGES 0.1/0.5 FILLET RADIUS 0.1/0.5	



**ALEPH
OBJECTS**
INCORPORATED

626 West 66th Street
Loveland, Colorado 80538, USA
Phone +1-970-377-1111
www.alephobjects.com

TITLE MOARstruder-heater-block			
SIZE A	DWG NO. PP-MP0154_revB	REV. B	
SCALE 2:1	DO NOT SCALE DRAWING	SHEET 1 of 1	